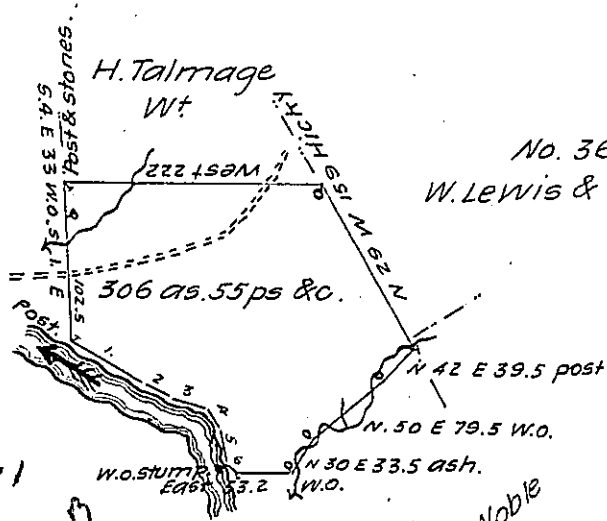


No. 511. C-176 227
Sholass Range
Wt.

Courses & distances
up Creek from post.

- No. 1. S. 60. E. 74
- " 2. S. 65. E. 26
- " 3. S. 69. E. 32
- " 4. S. 30. E. 22
- " 5. S. 13. E. 32 to R.O.
- " 6. S. 28. E. 4 to W.O. stump.



C-175-51

C-171-283

C-173-38

C-115-74

No. 3692
W. Lewis & R. Peters Wt.

Henry Noble
Row
Dan. Noble.
B-8-74

Draft of a tract of land situate in Tionesta township, Venango county, East of the Allegheny River, and North of and adjoining Tionesta creek, about a quarter of a mile from the mouth thereof.

Surveyed 30th October 1832, in pursuance of a Warrant granted to Henry Talmage, dated 17th August 1832.

Richd Irwin D.S.

Jacob Spangler Esqr.

Surveyor General of Pa.

IN TESTIMONY that the above is a copy of the original remaining on file in the Department of Internal Affairs of Pennsylvania, made conformably to an Act of Assembly approved the 16th day of February, 1833, I have hereunto set my Hand and caused the Seal of said Department to be affixed at Harrisburg, this sixteenth day of February 1907

Isaac R. Brown
Secretary of Internal Affairs.